

IPBC



For Horizontal Transfer - with Pretension System

- Available in capacities of 1 through 4.5 metric tons (Higher Working Load Limits are available upon request).
- Jaw openings available: 0" to 1.56".
- Welded steel body for strength and smaller size. Forged alloy, components where required.
- Equipped with handle for easy placement.
- Individually Proof Tested to 2 times the Working Load Limit with certification.
- Company name (CrosbyIP), logo, Working Load Limit and jaw opening permanently stamped on body.
- Each product is individually serialized, with the serial number and Proof Load test date stamped on body. User manual with test certificate is included with each clamp.
- Maintenance and repair kits are available.

IPHGUZ

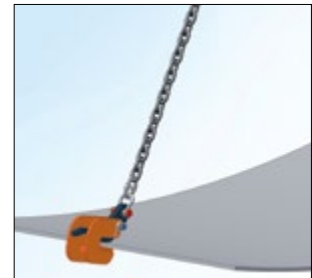
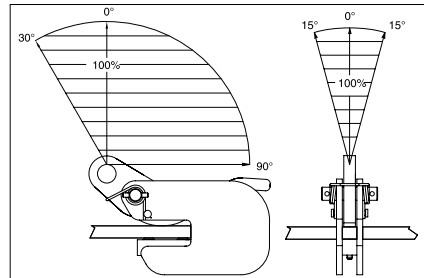
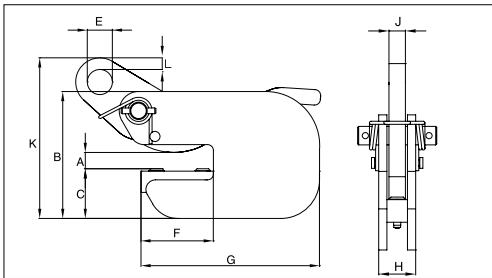


Load Rating

Model IPBC

Model	Working Load Limit (t)*	Stock No.	Weight Each (lb)	Dimensions (in)									
				Jaw A	B	C	E	F	G	H	J	K	L
IPBC	1	2700410	7.72	0 - 0.81	5.20	2.05	1.02	2.95	7.28	1.42	0.63	7.17	0.47
IPBC	2	2700411	14.3	0 - 1.00	5.98	2.44	1.18	3.23	8.27	1.93	0.79	8.58	0.59
IPBC	3	2700412	18.8	0 - 1.00	6.18	2.60	1.18	3.23	8.27	2.24	0.79	8.86	0.59

* Design Factor based on EN 13155 and ASME B30.20.



Model IPHGUZ: Universal Lifting Eye / Model IPHGZ: Fixed Hoisting Eye

Model	Working Load Limit (t)*	Stock No.	Weight Each (lb)	Dimensions (in)								
				Jaw A	B	C	D	E	F	G	J	K
IPHGUZ	1.5	2705455	19.8	0 - 1.00	4.33	9.13	11.30	2.76	5.47	3.54	0.79	0.63
IPHGUZ	3	2705456	43.9	0 - 1.56	4.69	9.96	13.70	2.95	6.89	4.72	0.98	0.79
IPHGUZ	4.5	2705457	66.1	0 - 1.56	4.69	11.85	14.57	3.15	6.89	6.10	1.18	1.73
Fixed Hoisting Eye												
IPHGZ	0.75	2705451	8.82	0 - 1.00	3.23	5.83	8.11	1.97	3.90	3.86	0.47	0.87
IPHGZ	1.5	2705452	4.41	0 - 1.00	4.33	7.87	9.84	1.97	4.65	3.54	0.79	1.10
IPHGZ	3	2705453	27.1	0 - 1.56	4.72	8.94	12.01	2.76	5.83	4.72	0.98	1.26
IPHGZ	4.5	2705454	55.1	0 - 1.56	4.72	11.18	15.00	2.76	7.13	6.10	1.18	1.57

* Design Factor based on EN 13155 and ASME B30.20.

